

# Technical Datasheet

## Model # ENPv



### Residential ESS - Slim Series



## Reliable Low Voltage Energy Storage Systems

- Residential Applications
- Small Commercial and Industrial Applications
- Micro Off Grid System

- Superior Efficiency  
Experience maximum efficiency with up to 90% usable energy.
- Exceptional reliability  
Our LFP-based battery technology ensures consistently high performance.
- Eco-friendly Design  
Free of heavy metals and corrosive materials for minimal environmental impact.
- IP65 Protection Rating  
Water- and dust-resistant, designed to withstand harsh environments.
- Expandable Capacity  
Effortlessly combine multiple units to increase energy output as needed.
- Extended Service Life  
Optimized cycle life exceeds 6000 cycles for long-lasting reliability.
- Flexible Investment Options  
Supports up to 3 units in parallel, with a total capacity of up to 30 kWh.
- Enhanced Safety Features  
Intelligent temperature control guarantees battery safety and longevity.
- Effortless Installation  
Modular design allows for quick and seamless integration.

# Model # ENP4020

## Residential ESS - Slim Series

BETA+



Auto ID



Automatically assign any host



Smart Temperature Control



Smart parallel technology compatible with batteries with different SOC and voltages

High energy demand in the morning and evening but solar generation is most efficient during the mid day. Enerגיעcel Battery storage systems balance the feeding and demands. Realize your grid independence.a

### Application Scenarios

- Residential Applications
- Small Commercial or industrial application
- Micro off-grid systems

### Technical Specification

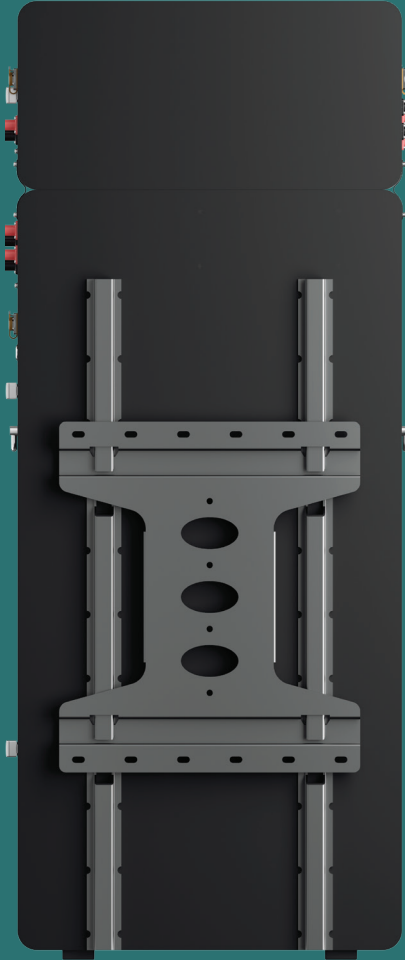
Model no	ENP4020
Number of power modules	1
Battery module Energy	10kWh
Useable energy	9.8kWh
Max Output Power	5kW
Peak Output Power	7kW, 10s
Nominal Voltage	400V
Operating Voltage range (Single Phase)	350V-430V
Dimension (W/D/H)	1470x110x600mm
Weight (included floor stad toolkit)	90Kg
Power Module Dimension (W/D/H)	20x110x600mm
Power Module Weight	8kg
Battery Module Dimension (W/D/H)	1200x110x600mm
Battery Module Weight	80kg
Installation	Floor stand (Standard), Wall mount (optional)
Operating Temperature	10C~+55C
Operatign Altitude	0-3000 m (Derating above 2000 m )
Environment	Indoor/Outdoor
Relative Humidity	5%~95%
Cooling	Natural Convection
Protection Rating	IP65
Noise Emission	29db
Cycle Life	>6000 (@25C, DoD 90%)
Display	SOC Status indicator LED Indicator
Cell Technology	Lithium iron phosphate (LiFePo4)
Scalability	Max 3 Systems in parallel operation
Communication Ports	CAN / RS485
Warranty	5 Years Standard ( 10 Years Optional)

# Model # ENP4020

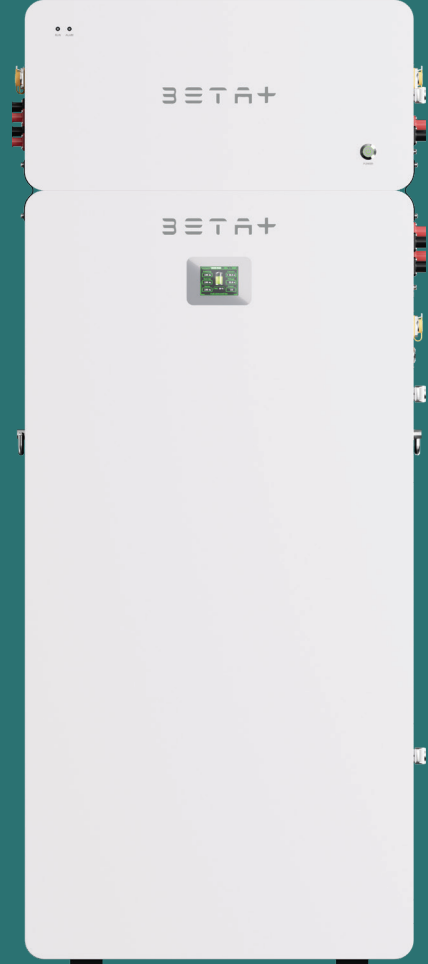
## Multiple Placements



Fast and Easy placement, save time and place.



BACK



FRONT

